

# Student Connectedness

Laguna Beach Unified School District  
Presentation to the Board  
February 14, 2017

Jenny Salberg  
Maximillian O Connor  
Alysia Odipo, Ed.D.

# Outcomes

Why Does Student Connectedness Matter?

What Does the Data Say?

What do Students Say about their Experiences in LBUSD?

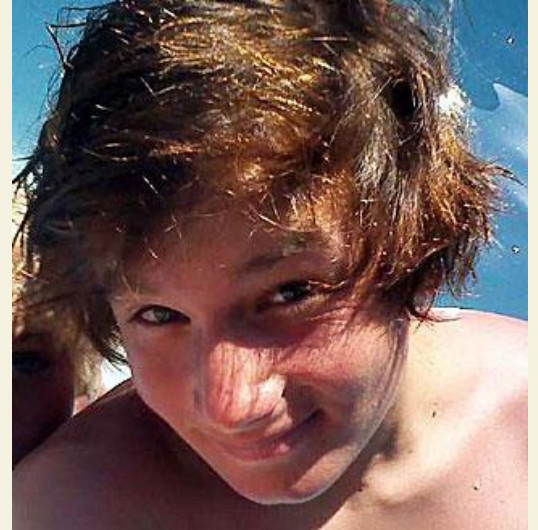
School Connectedness: A Glimpse into the Wealth of Opportunities for our Students

# LCAP Goal 4

**Safe, attractive, clean, well-equipped learning environments for all students that promote critical thinking, collaboration, creativity, and communication**

# Seth's Law

---



- ◉ Adopt a strong anti-bullying policy that specifically outlines anti-bullying practices, including sexual orientation and gender identity and gender identity/gender expression
- ◉ Adopt a specific process for receiving and investigating complaints of bullying, including a requirement that school personnel intervene if they witness bullying.
- ◉ Publicize the anti-bullying policy and complaint process, including posting the policy in all schools and offices
- ◉ Post on the district website materials to support victims of bullying

# Three Elements of Bullying

Unwanted Aggressive Behavior

Observed or Perceived Power Imbalance

Repetition of Behaviors or Likelihood of Repetition

# Leading Reasons for Bullying

Race or national origin

Peer perception that student was gay or lesbian

# Impact of Bullying on Youth

Feelings of low-self esteem and isolation

Perform poorly in school

Difficulty with friendships

Negative View of School

Report Psychosomatic and Mental Health Problems

## One in Five

School Age Students in US Reports Being Bullied in  
Past Year

[CDC , 2014](#)



## Positive School Climate Matters.

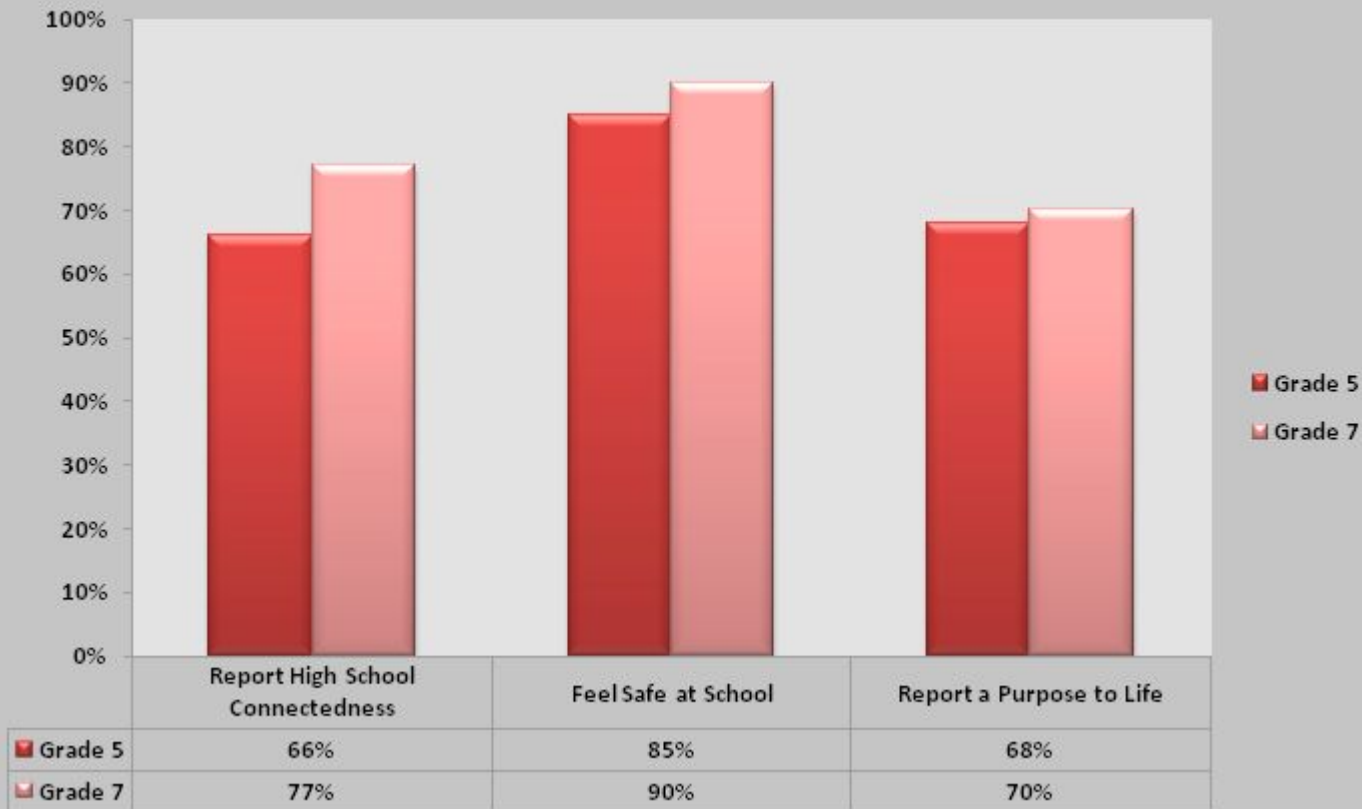
“a positive school climate includes caring relationships between teachers and students, physical and emotional safety, and academic and emotional supports that help students succeed – the opposite of a school culture where bullying is ignored.”

WestEd

# LBUSD CHKS

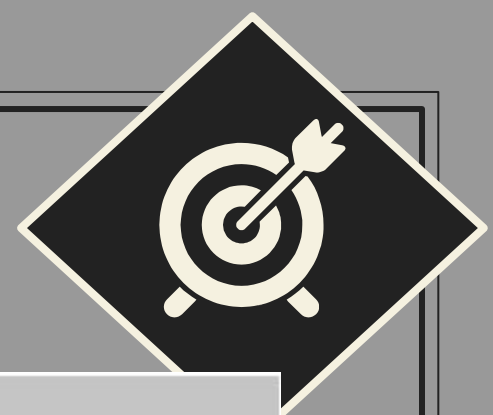


## Grades 5 and 7

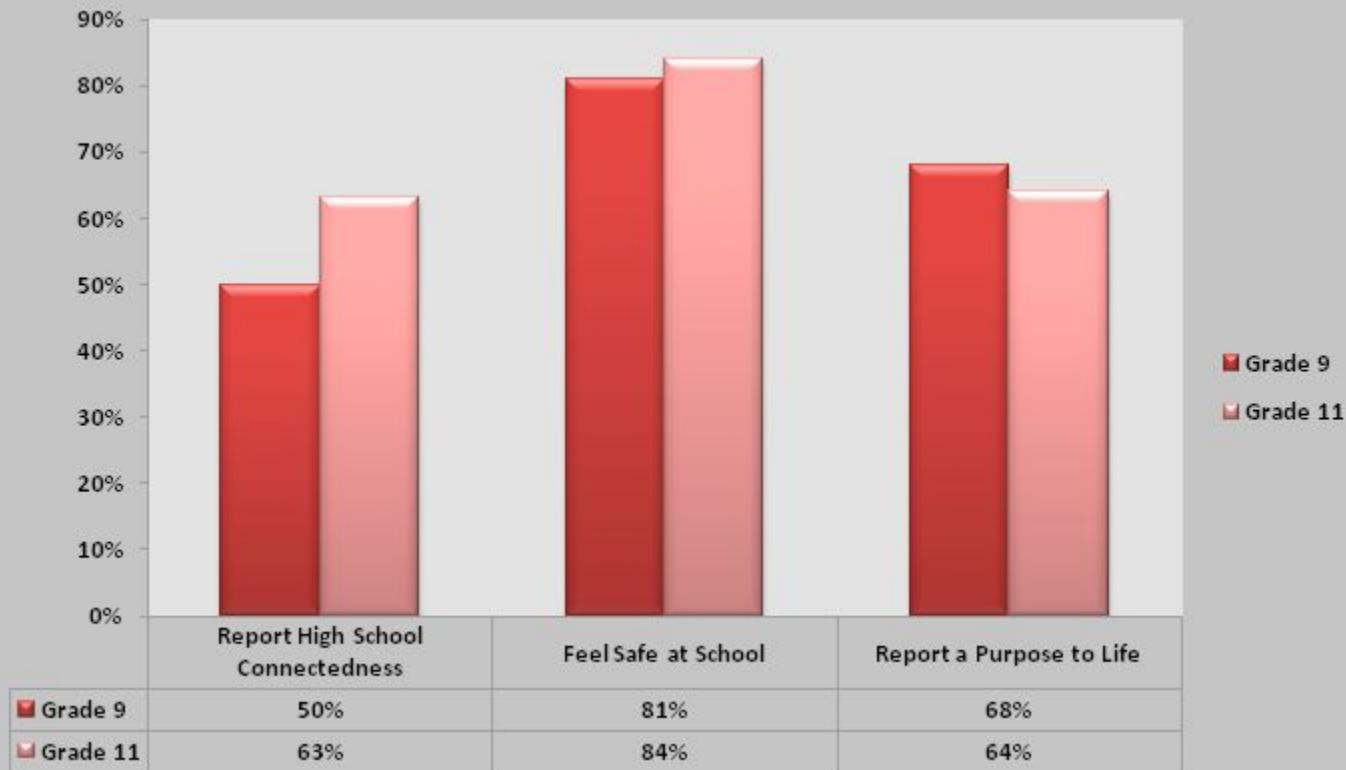




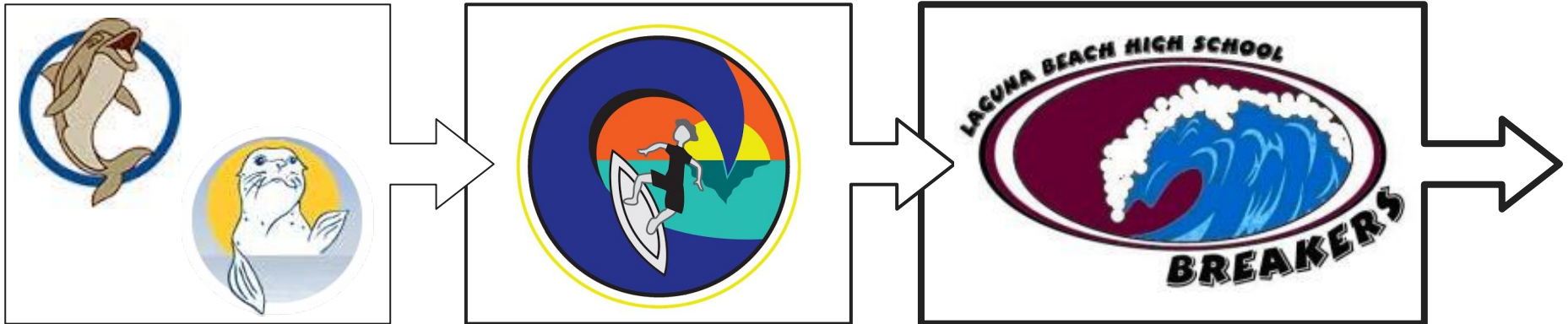
# LBUSD CHKS



## Grades 9 and 11



# LBUSD is Connected



Strategic Goal: School Culture/LCAP Goal Four

Each student will strengthen connections to the school, community, and the world by engaging in activities that build skills and responsibility.

# Thurston Middle School: SMART



In 2014 81% of our 7th graders reported they  
“feel safe at school”

In 2016 90% of our 7th graders reported they  
“feel safe at school”

# Thurston Fits Like a Puzzle

2014: 69% reported high levels of school connectedness  
2016: 77% reported high levels of school connectedness



2014: 36% reported any harassment or bullying  
2016: 28% reported any harassment or bullying

# Thurston CHKS



## School Climate Subscale Results

	SCI Scores			
	2014	2015	2016	Change
<b>Overall Supports and Engagement</b>	<b>368</b>	<b>ND</b>	<b>412</b>	<b>+44</b>
High expectations and caring relationships	335	ND	351	+16
Opportunities for meaningful participation	361	ND	396	+35
Perceived school safety	383	ND	422	+39
School connectedness	359	ND	408	+49
<b>Overall Low Violence and Substance Use</b>	<b>373</b>	<b>ND</b>	<b>456</b>	<b>+83</b>
Low physical violence perpetration	374	ND	458	+84
Low physical/emotional violence victimization	368	ND	457	+89
Low harassment and bullying	372	ND	454	+82
Low substance use at school	379	ND	452	+73

## Upcoming LCAP Opportunities

- February 6: Curriculum Council
- February 15: DELAC
- Feb-March: SSC and ELAC Meetings
- March 17: LCAP Advisory Council
- April 13: DELAC
- May 23: LCAP Board Study Session #2
- June 13: LCAP Public Hearing
- June 27: Approval of LCAP

And....PTA and Board Meetings

# Any Questions?

