



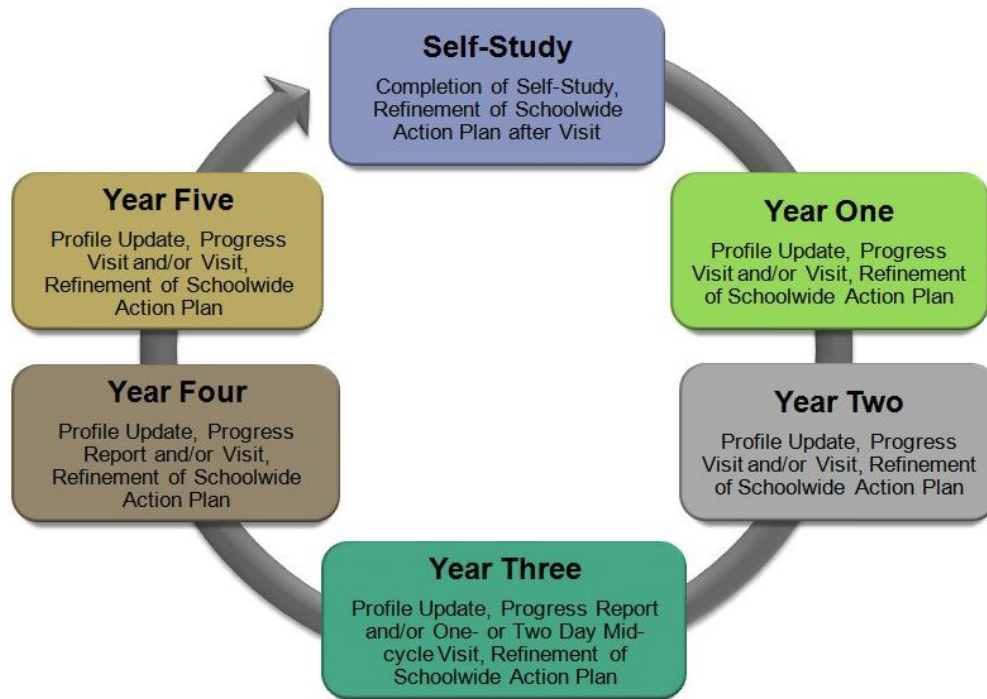
- #LBHSWASC -

# Breaker **Nation** WASC

...a journey to the top...

Report to the Board of Education  
September 24, 2019

# the WASC process



**ACS WASC Six-Year Accreditation Cycle**

**a**

Organization: vision &  
purpose, governance,  
leadership, staff and  
resources

**b**

Standards Based  
Learning: curriculum

**c**

Standards Based  
Learning: instruction

**d**

Standards Based  
Learning:  
assessment &  
accountability

---

**WASC**

**e**

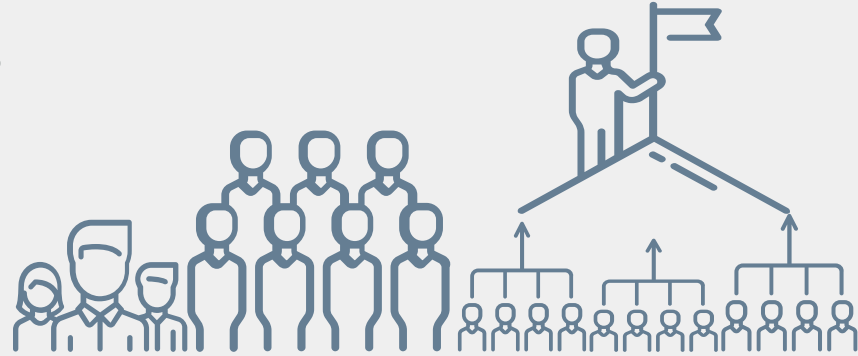
School Culture &  
Support: student  
personal & academic  
growth

---

# ABOUT the visitation PROCESS

Sunday 11/4/18 thru Wednesday 11/7/18

---





### LBHS areas of growth:

- ✓ evaluate and revise the school calendar, bell schedule, and teacher pull-outs to maximize student learning, usage of instructional minutes, and teacher effectiveness in classrooms.
- ✓ improve and increase student's access to intentional supports and challenging/relevant courses in order to narrow the achievement gap and to improve all students' academic and/or social- emotional outcomes.
- ✓ develop more systematic and frequent processes to formally and authentically evaluate and revise or eliminate courses, programs, student supports, new initiatives, and policies/procedures to ensure effectiveness in addressing identified student needs/outcomes.

the RESULTS <sub>growth</sub>



## LBHS areas of growth:

- ✓ develop a process for the timely and intentional use of data analysis (formative, summative and diagnostic), to impact instructional decisions, and to improve student engagement, learning outcomes and demonstration of depth of knowledge at a high level.
  - ✓ develop and agree upon a consistent and cohesive set of instructional practices using a common academic language to support best first instruction as related to improving student outcomes.
- 

the RESULTS<sub>growth</sub> (cont.)





## LBHS areas of strength:

- ✓ the extensive involvement of a significant number of students in activities and athletics
  - ✓ the integration of technology within the instructional program
  - ✓ the real-world experiences embedded throughout the instructional program, most notable in elective offerings
  - ✓ staff supports and promotes student choice within projects and assignments as they demonstrate acquisition of knowledge
  - ✓ strong student/staff connections
- 

the RESULTS strength



## LBHS areas of strength:

- ✓ significant financial support from parents and the community for school programs
  - ✓ students have strong support through the College and Career Center
  - ✓ multi-tiered systems of support for social emotional support, health and wellness, discipline, and attendance
  - ✓ students are engaged in project-based learning and assessments
- 

the RESULTS<sub>strength</sub> (cont.)



# WHAT is next will continue to SET US APART...

---



continue the process...

with a focus on:



options & alternatives



instruction



continue the stoke



global citizenship



collaborative learning



# Thank you

---

