



# Laguna Beach Unified School District Local Control and Accountability Plan (LCAP)

2016-2019

June 14, 2016

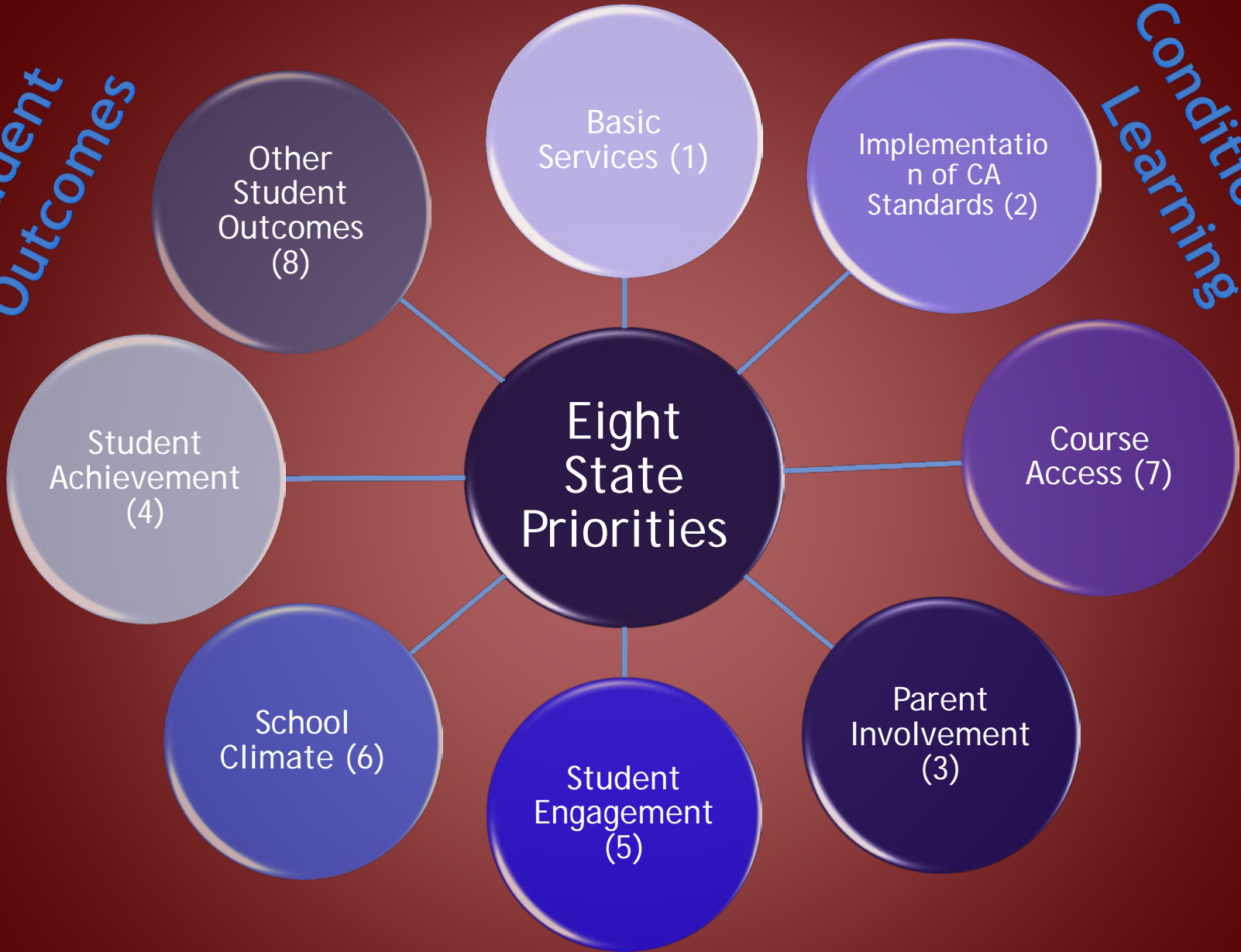
# LCAP Purpose

**The LCAP effectively communicates to all stakeholders:**

- 1. Locally defined LCAP GOALS**
- 2. Actions and Services to achieve LCAP Goals**
- 3. Expenditures associated with the LCAP Goals**

*Student Outcomes*

*Conditions of Learning*



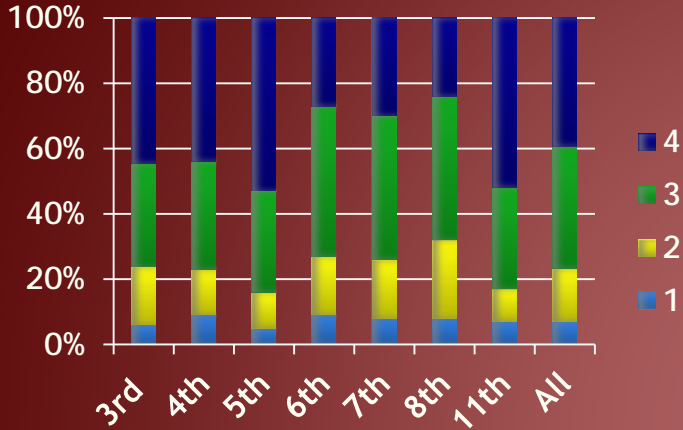
**Student Engagement**

# Stakeholder Input

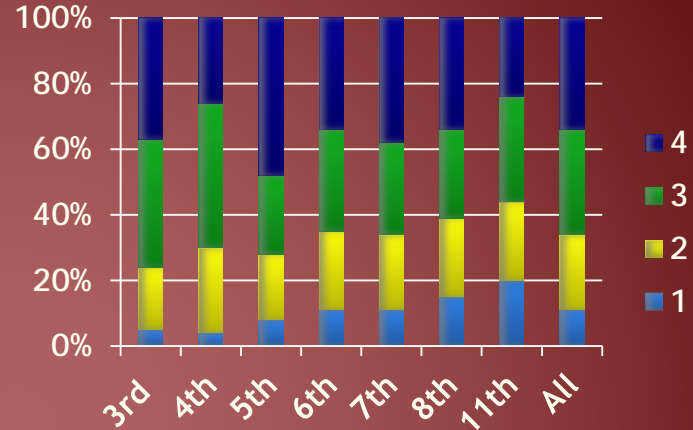
- ✓ PTA and Staff Meetings
- ✓ PTA Council
- ✓ Site Advisory Committees
- ✓ D-ELAC Meetings
- ✓ LCAP Stakeholder Survey
- ✓ LCAP Advisory Committee
- ✓ LCAP Planning Committee

# Student Achievement

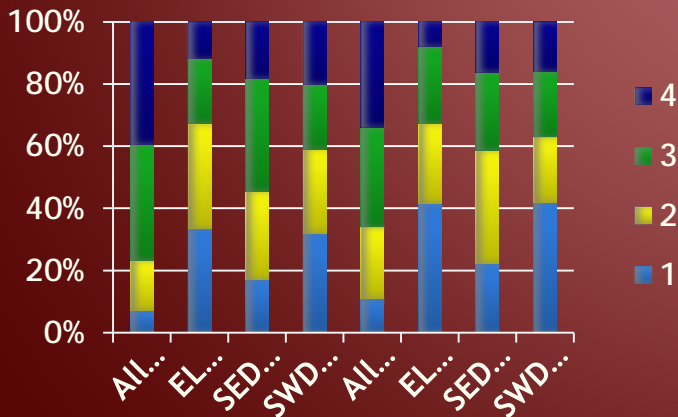
## 2015 SBA English Language Arts



## 2015 SBA Mathematics



## 2015 SBA English Language Arts

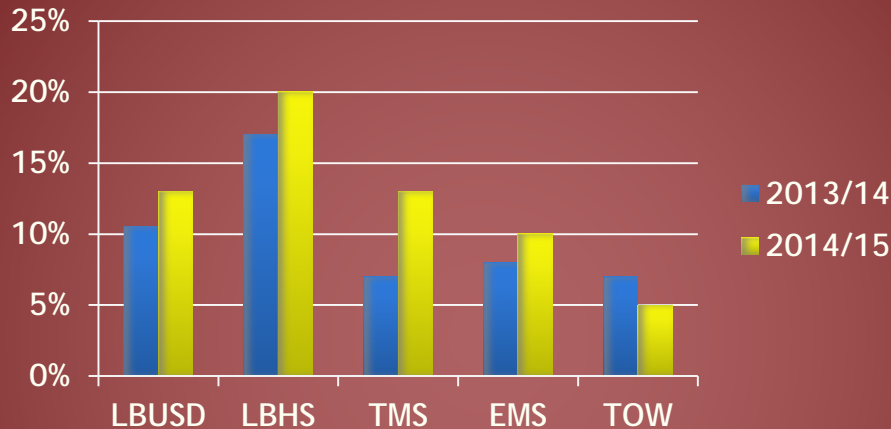


## Students Who Passed an AP Exam with a 3 or Higher

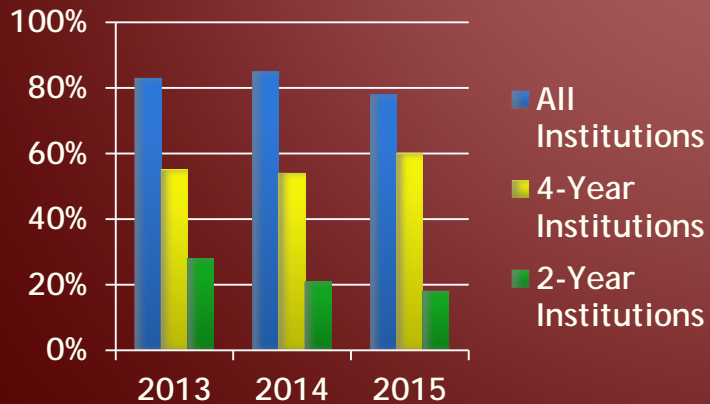


# Student Engagement College & Career Readiness

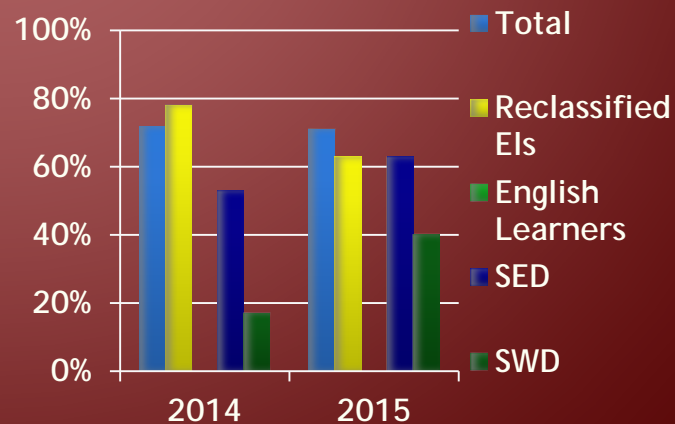
## Chronic Absenteeism



## Students Enrolled in College immediately after High School



## Graduate "a-g" completion

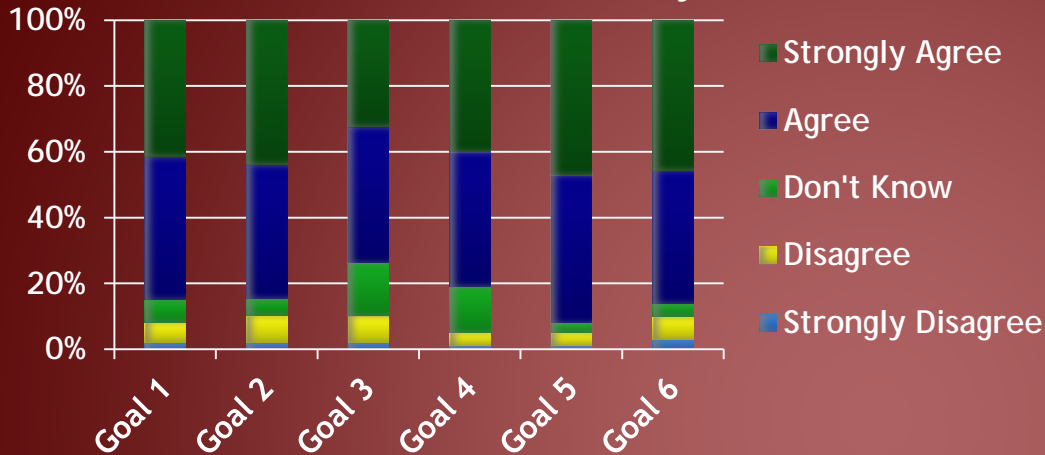




# 2015 LCAP Survey Results

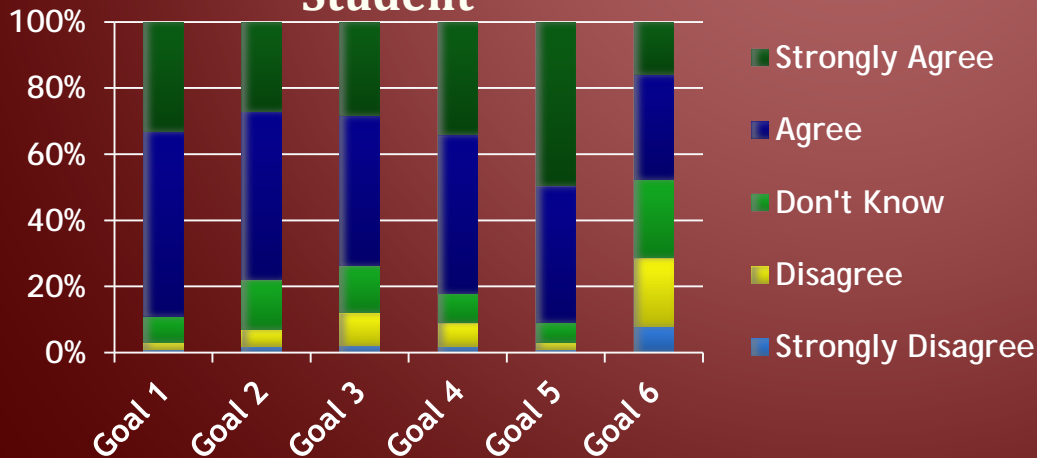
## District-Wide Results

### Parents, Staff, Community



## District-Wide Results

### Student



- Goal 1 - Student Achievement
- Goal 2 - Student Support
- Goal 3 - College and Career Readiness
- Goal 4 - Professional Development
- Goal 5 - Facilities
- Goal 6 - Parent Involvement

# Revised Goals, Actions, and Services for LCAP 2016-19





# Increase student academic achievement through collaboration, critical thinking, creativity, and communication.

- ✓ Promote 4Cs, effective use of technology, and writing across the curriculum
- ✓ A comprehensive assessment system
- ✓ 21st Century real-world technology tools and high quality art instruction
- ✓ Depth of knowledge and increased rigor
- ✓ Common Core aligned instructional materials

Increase student achievement and social/emotional strength by providing quality first instruction, intervention, support, and enrichment through multi-tiered support systems.

- ✓ Targeted support and intervention
- ✓ Differentiated instruction to meet the needs of ALL students
- ✓ Enrichment and engagement opportunities
- ✓ Counseling programs and behavioral supports
- ✓ English Language Development at all school sites

All students will gain the knowledge and skills to be college and career ready through a wide variety of academic and enrichment opportunities.

- ✓ Implement and expand CTE pathways, ROP courses, UC/CSU a-g courses, and STEM elective courses
- ✓ Increase participation and success in the AP program and on SAT/ACT testing for all students
- ✓ Increase access to “a-g” courses for ALL LBUSD student
- ✓ Expand College and Career Readiness instruction in elementary grades

# Professional Development focused on 21st Century teaching and learning.

- ✓ Cohesive professional development plan designed to enhance 21st Century instruction utilizing technology, communication, collaboration, critical thinking, creativity, and project-based learning.
- ✓ Instructional TOSAs and EL TOSA
- ✓ Site administrators and classified staff participation in professional development

Safe, attractive, clean, well equipped learning environments for all students that promote critical thinking, collaboration, creativity, and communication.

- ✓ 4C Learning Environments
- ✓ Facilities Conditional Assessment to systematically approach upgrading and maintaining facilities
- ✓ Comprehensive school safety plans for each site with input from city emergency management stakeholders, district personnel, staff, and parents.

All stakeholders will be engaged in the learning process by promoting a variety of opportunities for parents, students, staff, and the community that strengthen communication and meaningful participation.

- ✓ Continued collaboration with PTA, SchoolPower, LB Community Coalition, and other local businesses and community organizations
- ✓ School Advisory Councils to provide stakeholder input on the School SPSAs.
- ✓ D-ELAC meetings to inform EL parents of district programs and solicit feedback.
- ✓ Parent education programs and informational events





For more information or to view the  
2016-19 LCAP and Annual Review  
please visit [www.lbusd.org](http://www.lbusd.org)